



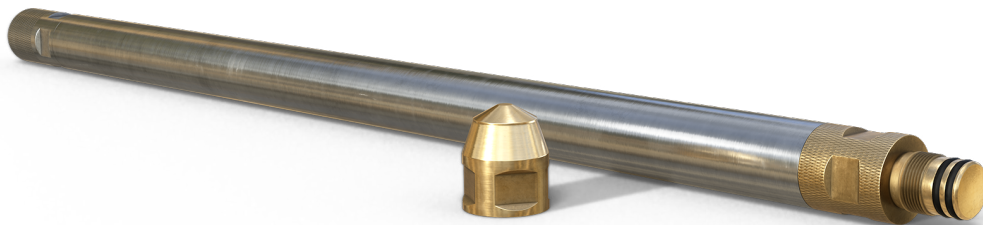
Stockholm  
Precision Tools



**GyroGamma™**

**Log natural gamma radiation data while measuring with GyroMaster™**

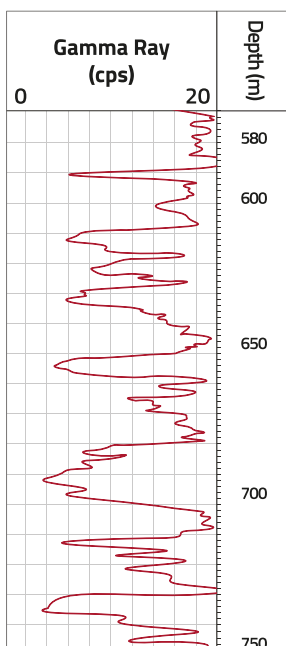
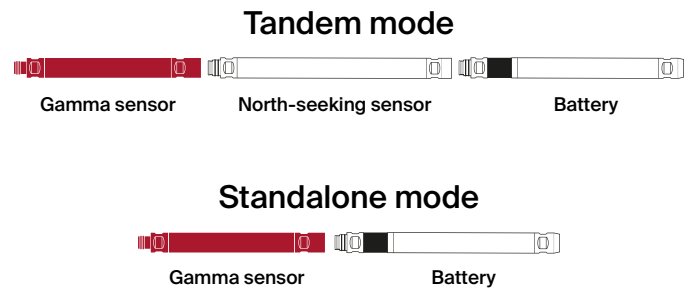
**Easily operated by the driller. No additional technicians required**



# GyroGamma™

## Technical specifications

Dimensions	
Weight	4.4kg
Length (sensor)	800mm
Length (sensor + battery)	1647mm
Length (sensor + battery + GyroMaster™)	2486mm
Diameter	42mm
Operation	
Detector type	CsI(Na)
Deployment options	Modular/Standalone
Measurement range	API and uR/h
Performance	
Temperature range	-25°C up to +60°C (-13°F up to 140°F)
Pressure rating	50MPa



### Depth correlation and simultaneous GyroMaster™ measurement

GyroGamma™ is a revolutionary and efficient tool. It allows you to record a natural gamma radiation log while simultaneously measuring the borehole trajectory with GyroMaster™. It is operated from the same easy-to-use and intuitive software that drillers are already familiar with. Use our optical depth encoder for a detailed, on-depth gamma log.

### Save time and costs with GyroGamma™

GyroGamma™ uses the natural formation gamma radiation to determine lithology for depth correlation between boreholes. It can be operated by the driller, eliminating the need to hire an additional technician or expensive wireline equipment.

### Maximum compatibility with GyroMaster™ and SmartCloud™

GyroGamma™ records all your measurements in a centralised data file that can be instantly uploaded to the SPT SmartCloud™ cloud platform. This ensures that data is always available, accessible and secure.

#### EUROPE

Sweden (HQ)  
+46 (8) 590 733 10  
Spain  
+34 (952) 179 918  
Ukraine  
+38 (067) 562 91 69

#### AFRICA

South Africa  
+34 (952) 179 918  
Ghana  
+233 (55) 595 6594

#### NORTH AMERICA

Canada  
+1 (877) 594 4633  
USA  
+1 (737) 204 2632  
Mexico (North)  
+52 (662) 110 0219  
+52 (662) 229 4755  
Mexico (South)  
+52 (662) 430 7255

#### SOUTH AMERICA

Argentina  
+54 (9) 26 1623 1542  
Brazil  
+55 (31) 99625 4379  
Chile (Santiago)  
+56 (225) 821 158  
Colombia  
+57 (310) 839 5418

#### Ecuador

+593 (99) 200 1060  
Peru  
+51 (913) 175 205  
Bolivia  
+591 (7) 72 12107

#### ASIA-PACIFIC

Perth Australia  
+61 (0) 861 156 379  
Indonesia  
**+62 (811) 118 1608**  
**inquiry@alternate.id**

#### EURASIA

Armenia  
+374 (77) 815 683



Stockholm Precision Tools

www.alternate.id | 0811 118 1608  
inquiry@alternate.id

© Stockholm Precision Tools AB. All rights reserved. 2C-07/2023